

# COVID-19 POLL

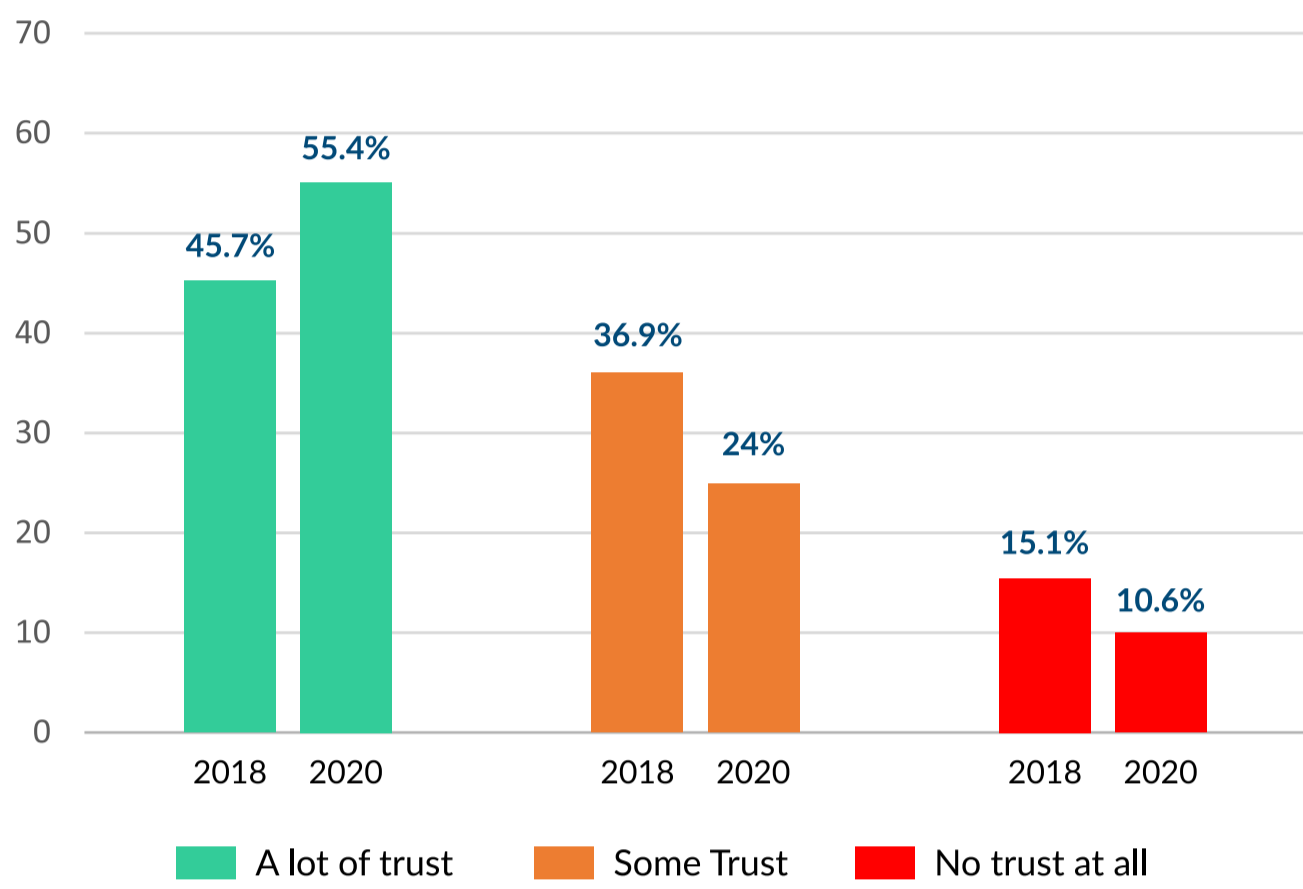
## Indians trust in the Election Commission rises

Team CVoter conducted a series of surveys to find out the level of trust Indians placed in the Election Commission in 2018 and 2020. The Election Commission in India is the autonomous body responsible for the administration of all national, state and district level elections. In the past 2 years, Indians' trust in the Election Commission has increased by roughly 10%.

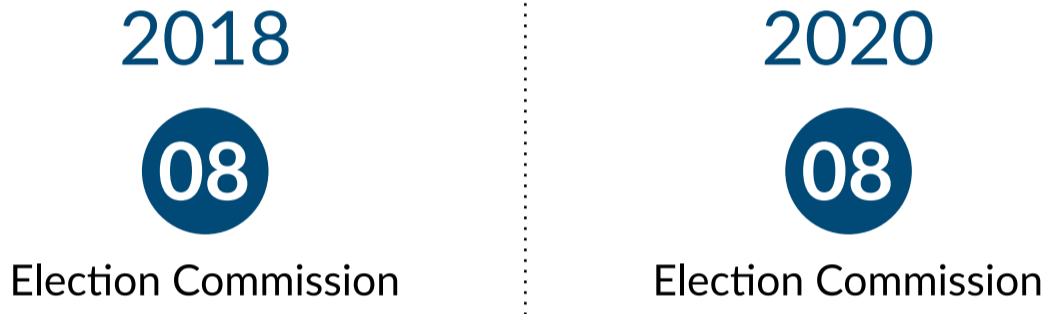
Team Polstrat breaks down the increase in levels of trust across demographics in India over the past 2 years.



**Q** How much do you trust the following institutions? Do you have; a lot of trust, some trust or no trust at all in Election Commission?



The rank of Election Commission amongst all 18 institutions asked about in the survey remained unchanged in 2020 as compared to 2018.



## Breaking Down 2020 Data

### Election Commission

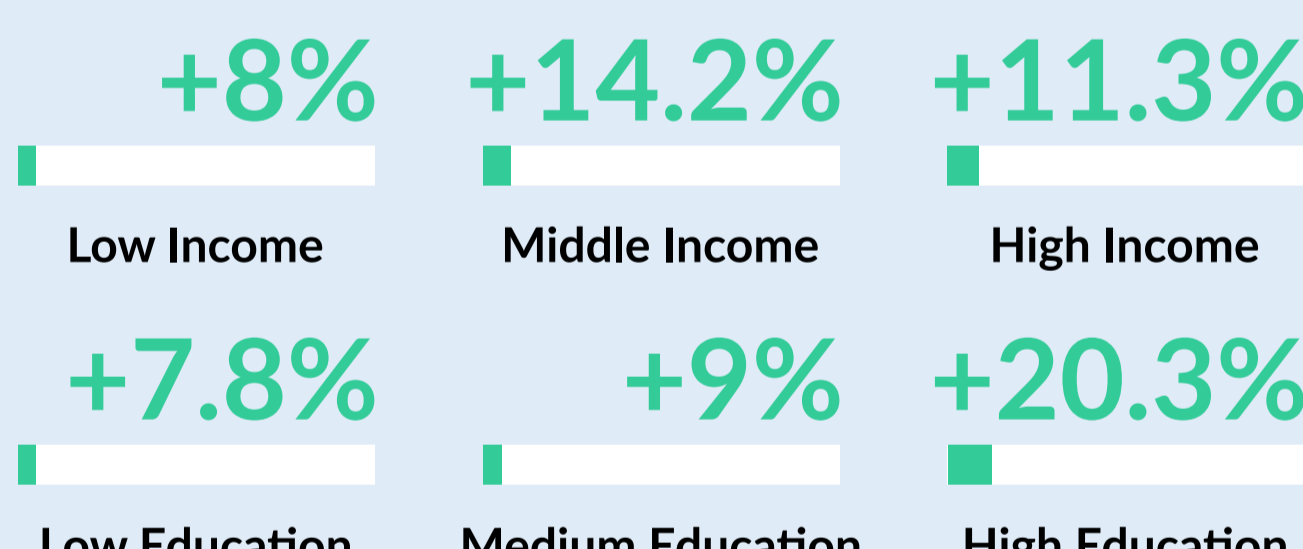
Overall, the level of trust in Election Commission rose from 45.7% in 2018 to 55.4% in 2020.



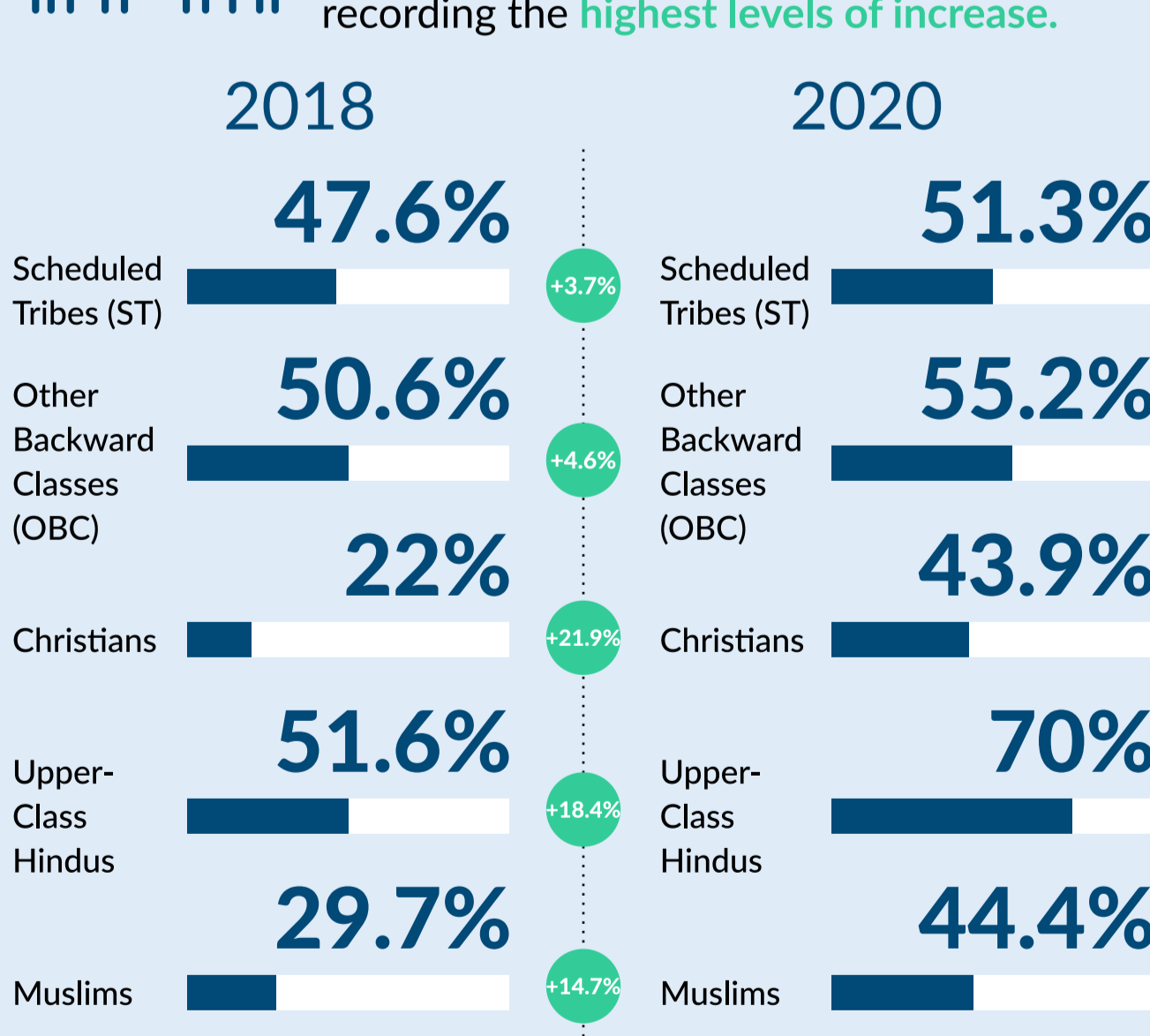
Most demographics, across age, gender, social, income and education groups recorded an **increase in their levels of trust** in the Election Commission.



Across income and education groups, there was an **increase in trust** in the Election Commission.



All social groups also reported an **increase in trust** in the Election Commission, with Christians, Upper-Class Hindus and Muslims recording the **highest levels of increase**.



Those living in **urban areas** had **significantly higher levels of trust** in the Election Commission than those living in rural areas.



All survey findings and projections are based on the Team CVoter "Trust in Institutions" survey carried out in 2010, 2018 and 2020 among 18+ adults statewide, including every major demographic.

The data is weighted to the known demographic profile of every state, including age group, social group, income, region, gender and education levels.

|                     | 2018         | 2020         | Total        |
|---------------------|--------------|--------------|--------------|
| <b>SAMPLE SIZE:</b> | <b>2,709</b> | <b>1,347</b> | <b>4,056</b> |

